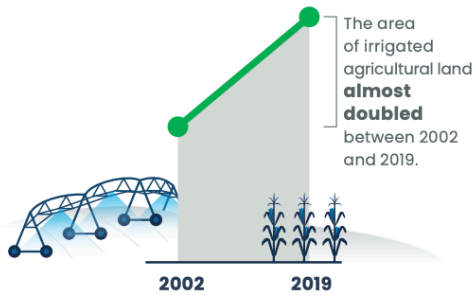


Pressures on our land

Conversion and fragmentation of highly productive land on urban fringes reduces the amount of land available for future food production.



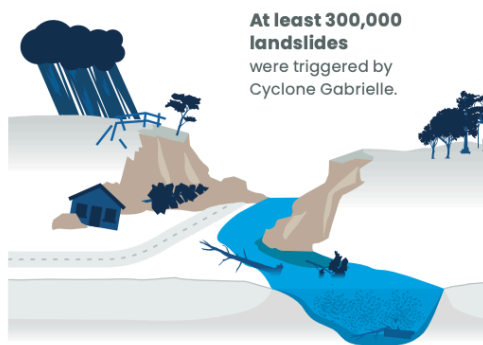
The key pressures faced by our land environments are **changes in land use, along with adverse effects from pollution, climate change, and invasive species.**



Intense agriculture places pressure on the health and functioning of ecosystems.



Pests are a pressure on our native biodiversity and productive landscapes.



At least 300,000 landslides were triggered by Cyclone Gabrielle.

Climate change is a direct pressure that worsens the impact of other pressures.

Between 2000 and 2018 we generated **among the highest waste per capita** in the developed world.



Waste and contaminants place growing pressure on soil and water quality.

Source: Ministry for the Environment, Stats NZ and data providers and licensed by the Ministry for the Environment and Stats NZ for reuse under the Creative Commons Attribution 4.0 International licence.

Crown copyright ©.

